

# What can affect your health?



- \* Are you worried about your health?
- \* Are you worried about your family's health?
- \* Are you interested in finding out ways to stay healthy for you and your family?
- \* Would you like support accessing health services?

Traveller Community Health Workers are there to give you support around this.

**Call : 021 450 3786**

## For more information contact:

TVG Community Health Coordinator

TVG  
25 Lower John Street  
Cork

Tel: 021 450 3786  
Mob: 087 130 1756  
Email: tvgtchw@gmail.com

Your Local Traveller Health  
Community Worker

Name: \_\_\_\_\_

Number: \_\_\_\_\_



**Cork Traveller  
Visibility Group Ltd.**

**HE** Feidhmeannacht na Seirbhíse Sláinte  
Health Service Executive

## Information Leaflet



*Promoting Health Within  
the Traveller Community*



## About Traveller Community Health Workers

Traveller Community Health Workers are Travellers who have training and experience working in the Traveller community.

They work alongside other health professionals to improve the uptake and inclusion of Travellers in health services.

They act as a link between health services and their community to provide information and support to Travellers, encouraging them to access health services.



## Where to find Traveller Community Health Workers?

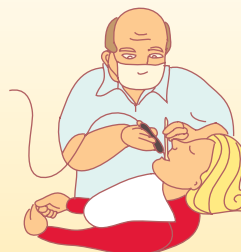
They work as part of a team with the Community Development Workers in TVG to support the development of the Traveller Community in Cork City.

They are available to all Travellers living in Cork City.

## Services That We Offer:

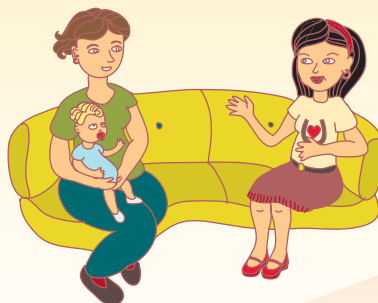
- \* Provide Primary Health Care information to the Traveller Community

- \* Help Travellers gain access to health services



- \* Highlight the difficulties faced by Travellers and act as advocates.

- \* Outreach to Travellers about health.



- \* Network with the Traveller Community and the HSE.

- \* Involvement and support in Policy Development for Travellers.



- \* Support and promote Traveller Culture and Identity



- \* Assist in the delivery of Health Education and Health Promotion Programmes.

- \* To inform Travellers of the findings of the All Ireland Traveller Health Study (AITHS).

- \* Work as part of a team to improve the Health status of the Traveller Community in Cork.

